

Figure 1

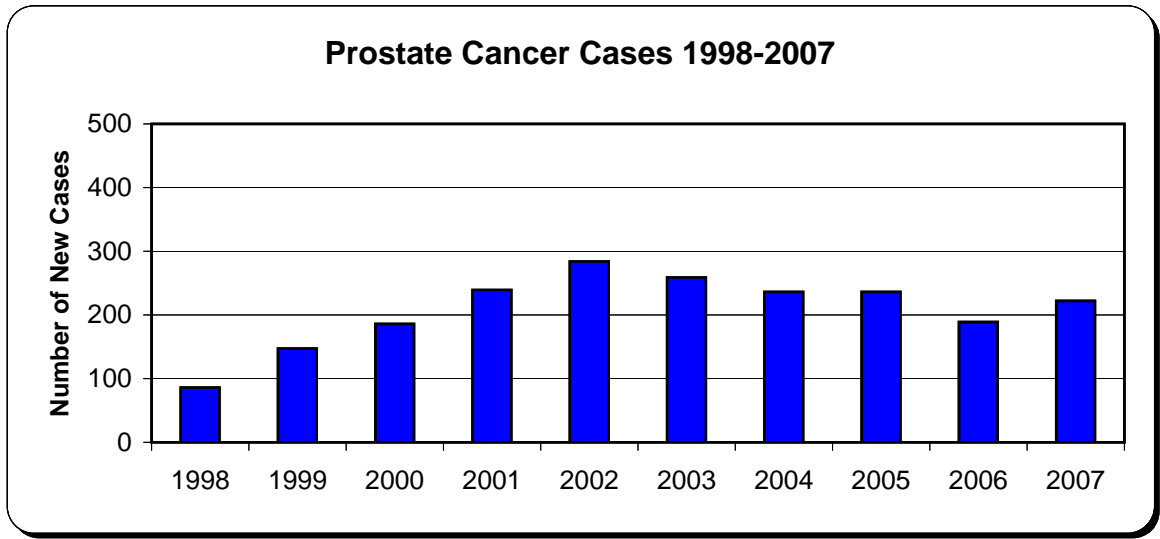


Figure 2

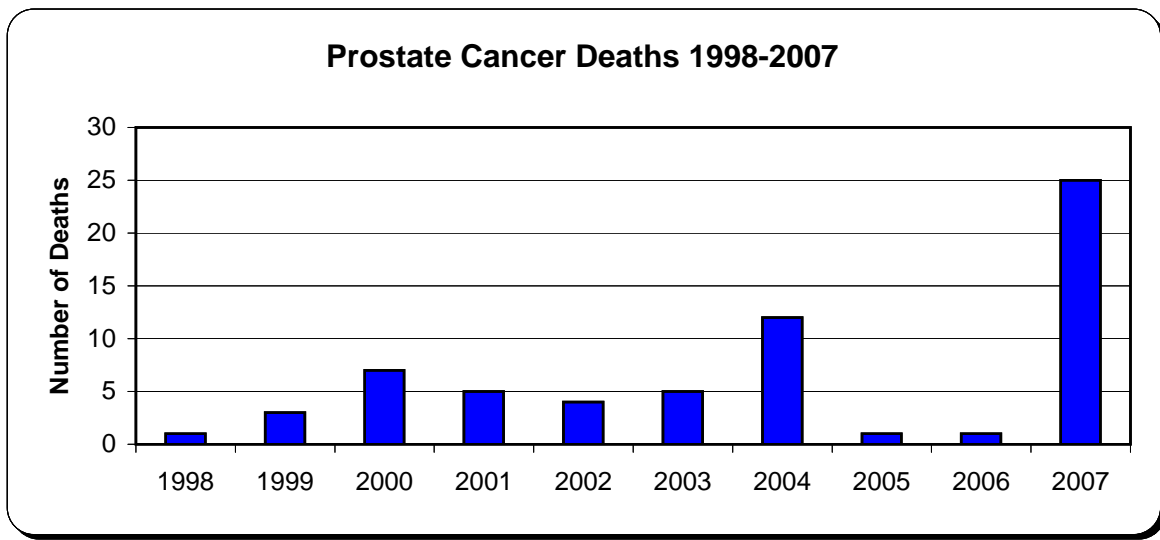
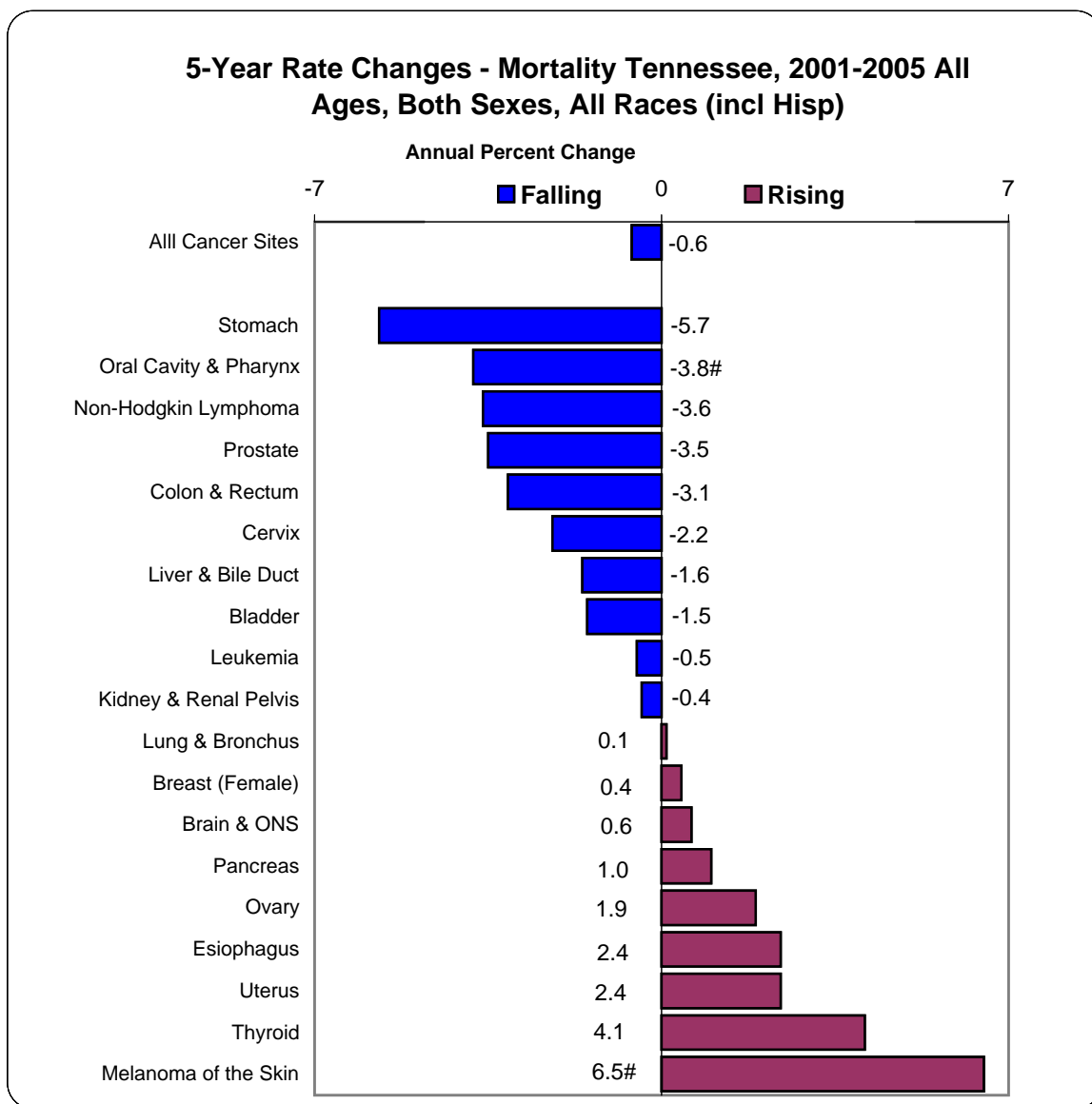


Figure 3



Created by statecancerprofiles.cancer.gov on 3/15/2009 10:00a.m.  
 Annual Percent Change (APC) over the 5-year period calculated by SEER Stat.  
 Source: Death data provided by the National vital Statistics System public use data file.  
 Death rates calculated by the National Cancer Institute using SEER Stat. Death rates (deaths per 100,000 population per year) are age-adjusted to the 2000 US standard population (19 age groups: <1, 1-4, 5-9..., 80-84, 85+). Population counts for denominators are based on Census populations as modified by NCI.

# - The annual percent change is significantly different from zero ( $p < 0.05$ ).

Figure 4

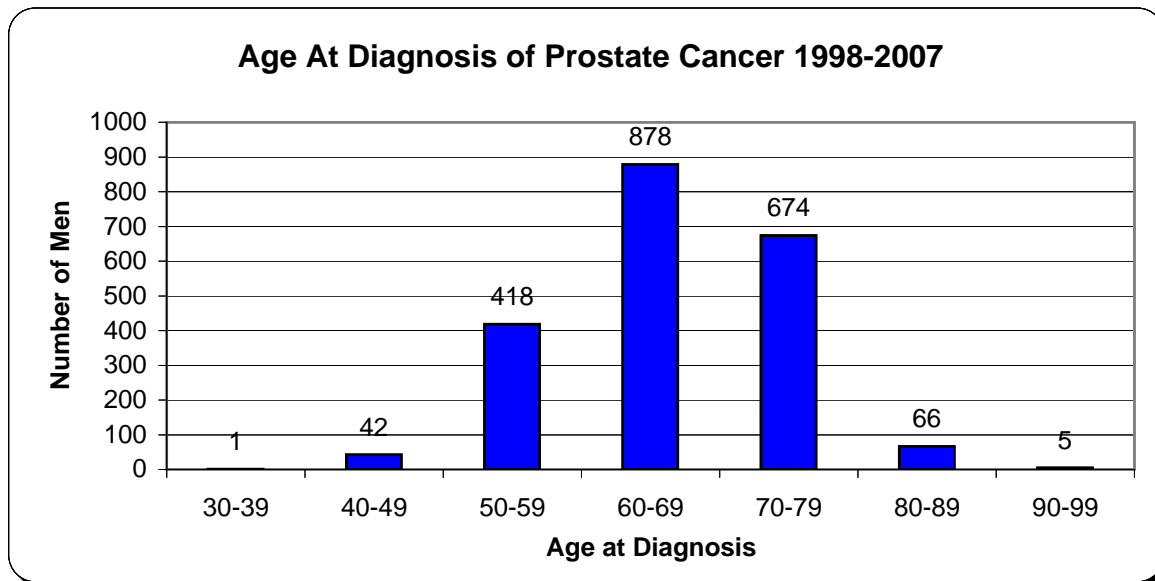


Figure 4a

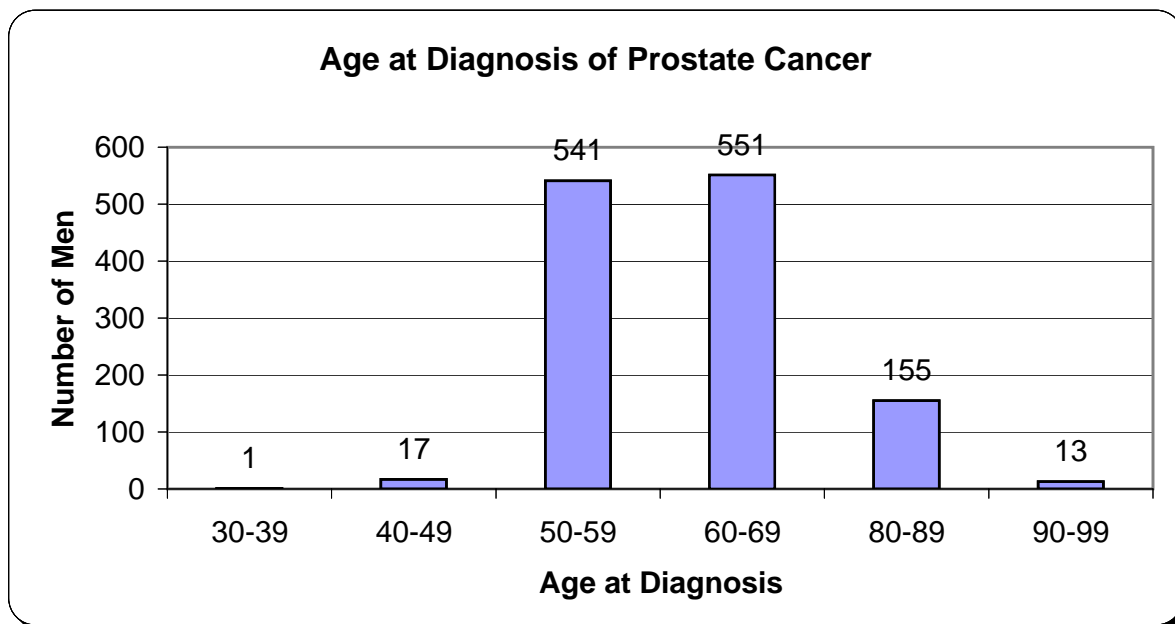


Figure 5

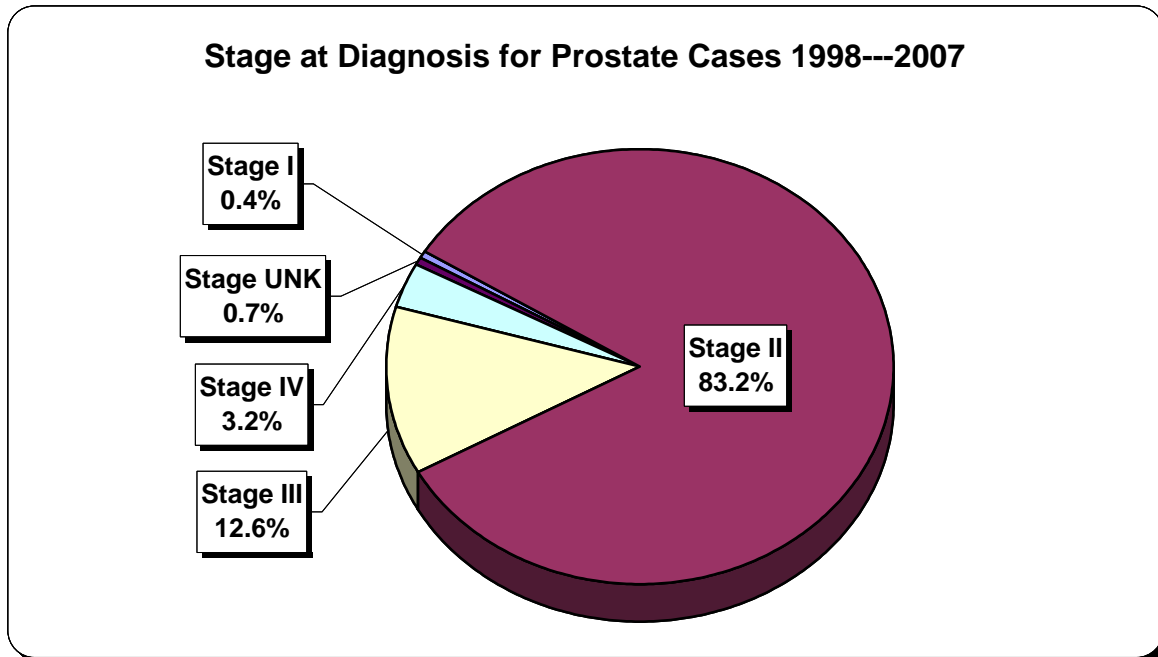


Figure 5a

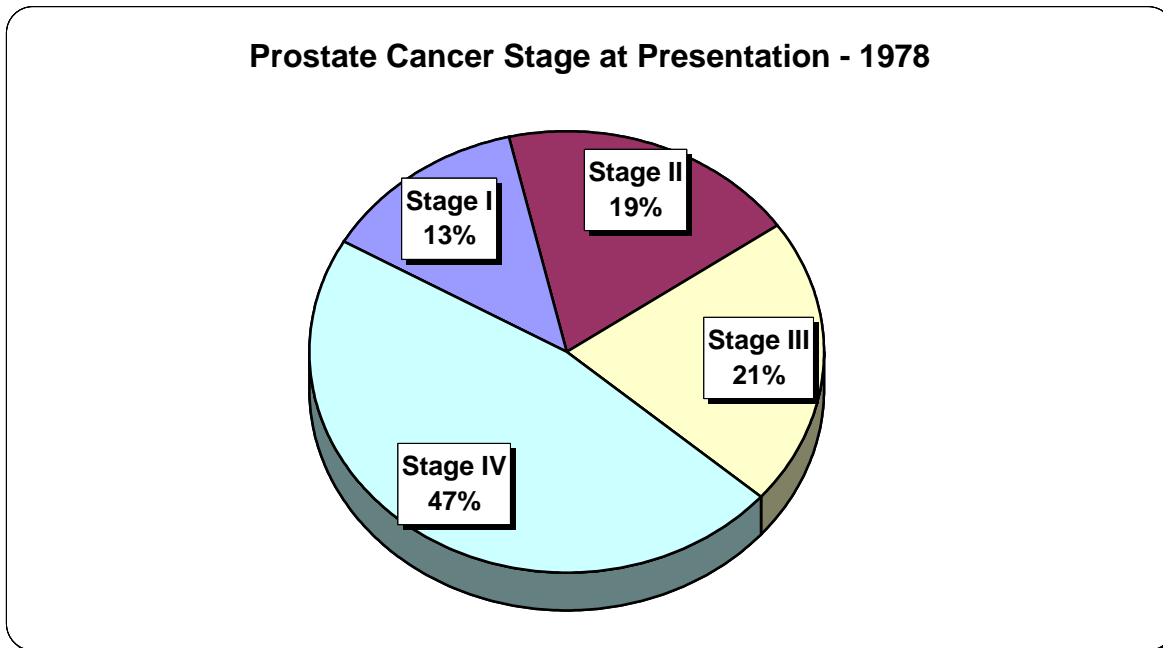


Figure 6

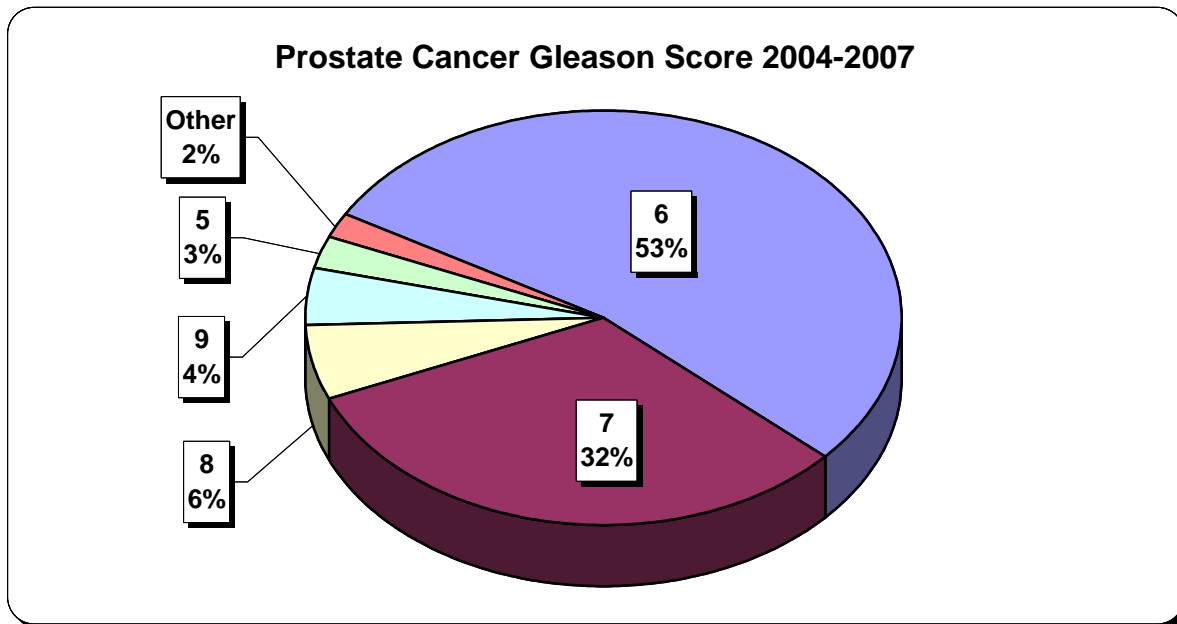


Figure 7

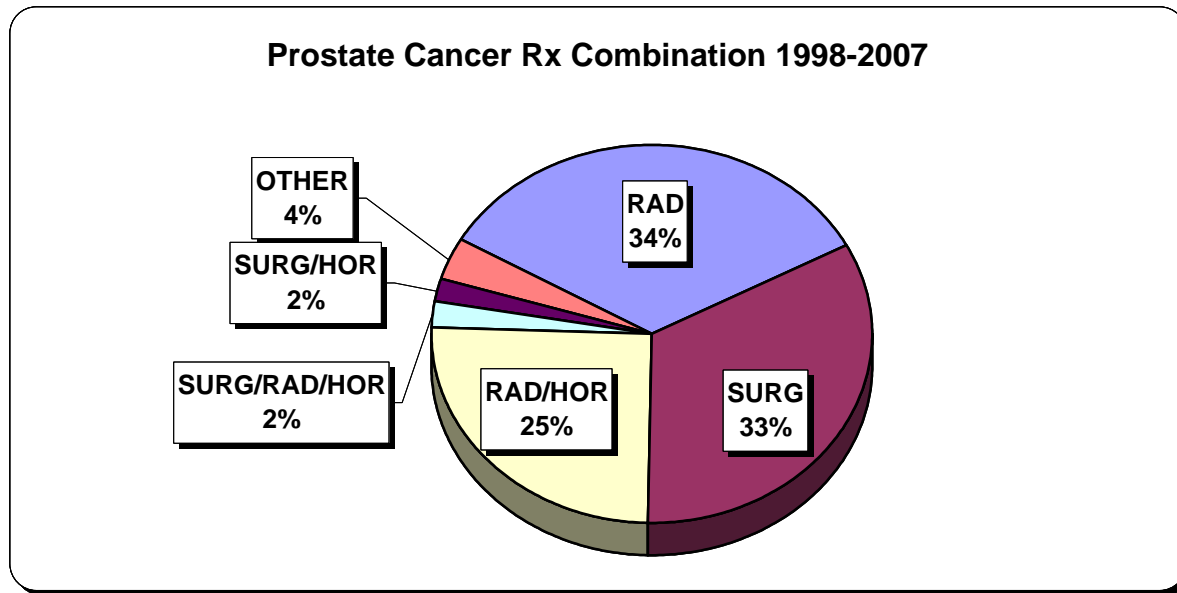


Figure 7a

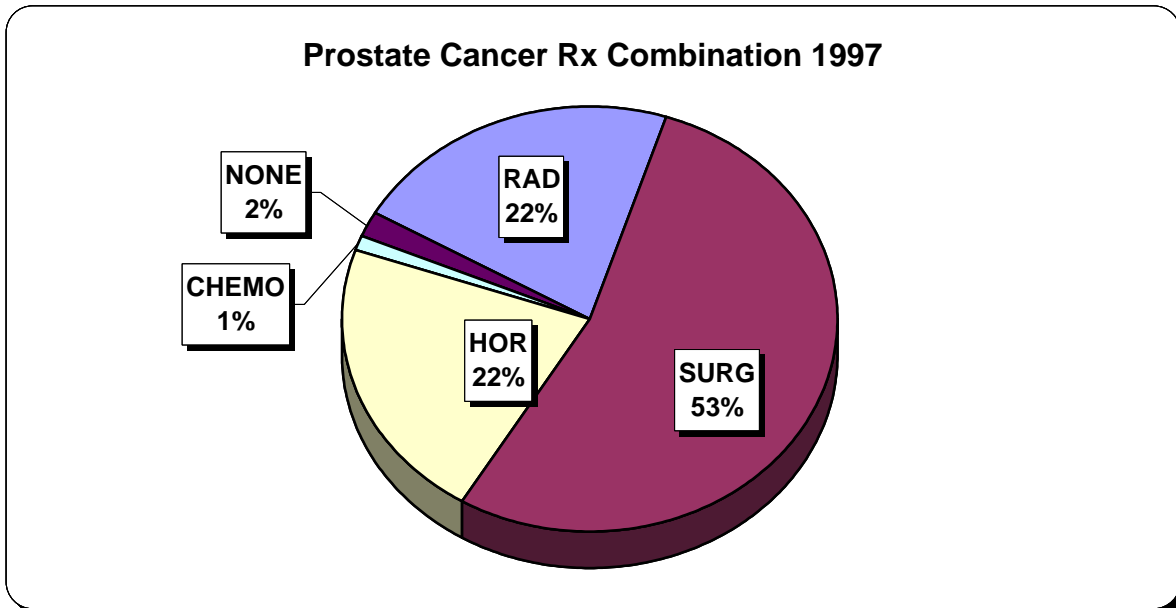


Figure 8

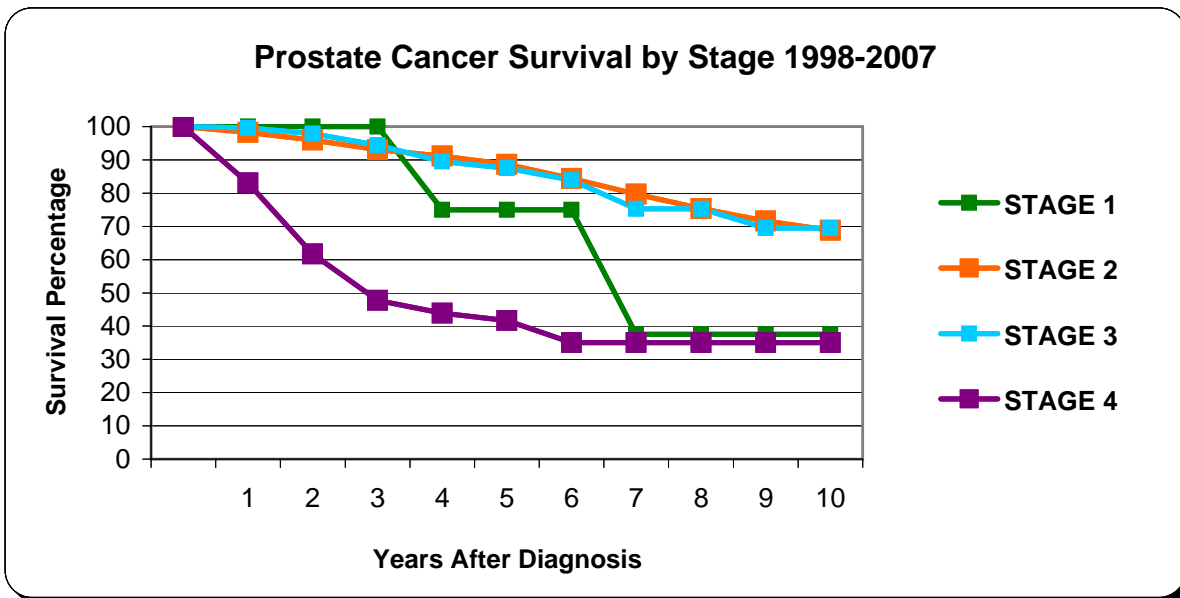


Figure 9

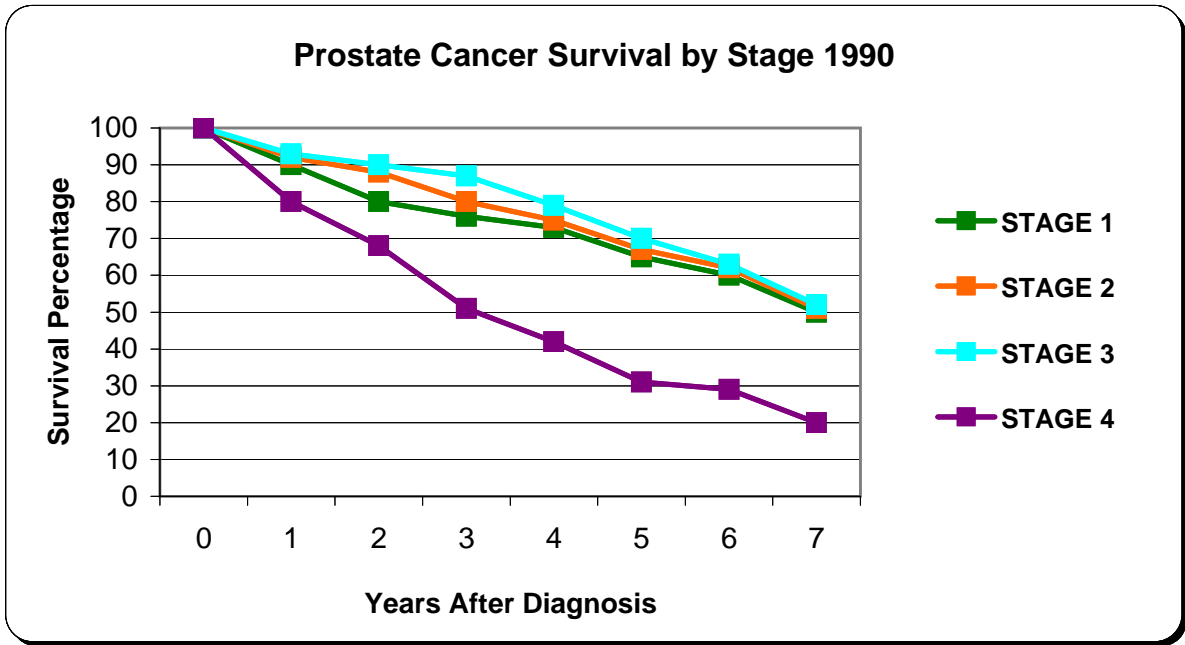


Figure 10

