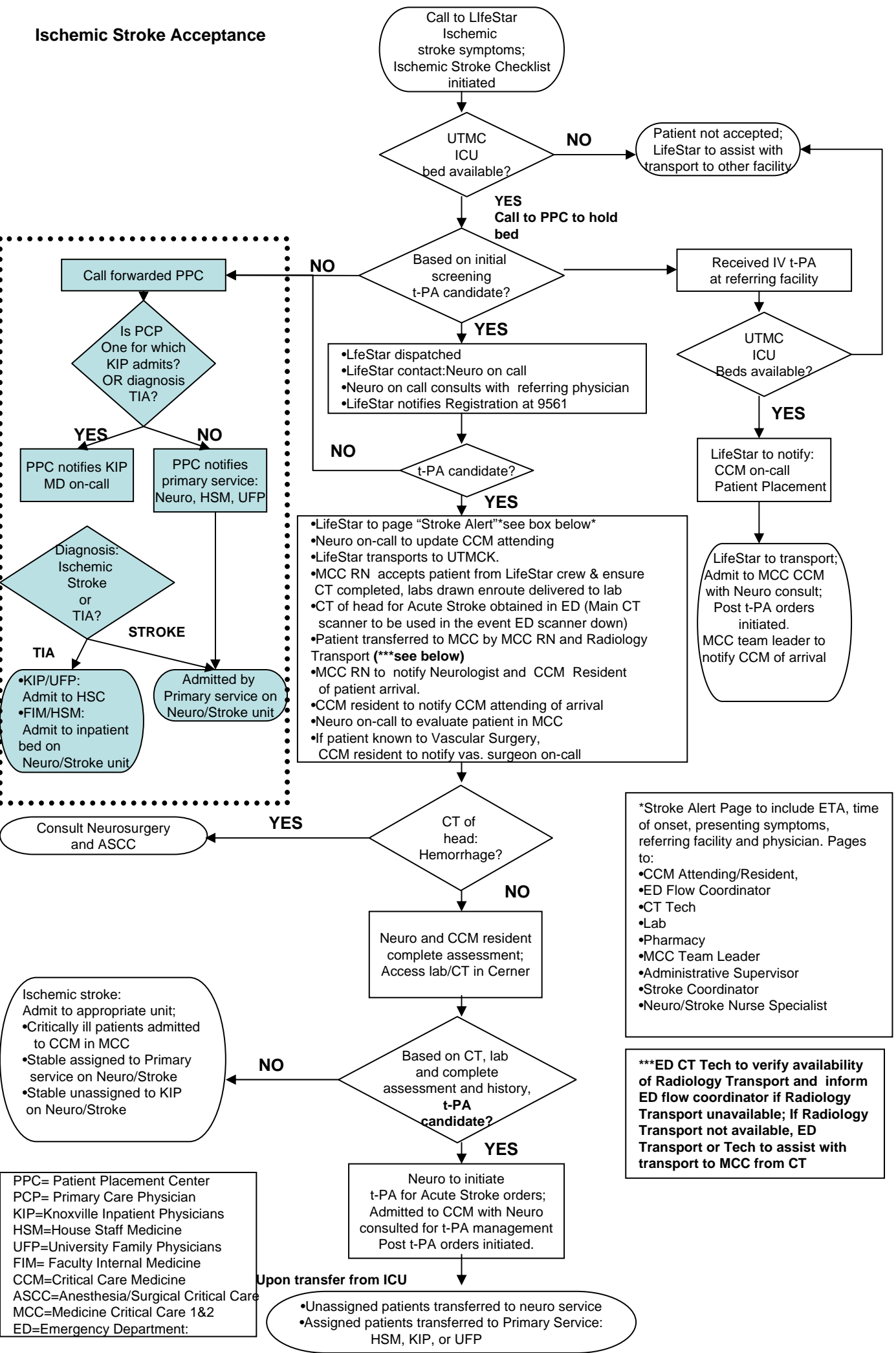


Ischemic Stroke Acceptance



PPC= Patient Placement Center
 PCP= Primary Care Physician
 KIP=Knoxville Inpatient Physicians
 HSM=House Staff Medicine
 UFP=University Family Physicians
 FIM= Faculty Internal Medicine
 CCM=Critical Care Medicine
 ASCC=Anesthesia/Surgical Critical Care
 MCC=Medicine Critical Care 1&2
 ED=Emergency Department:

*Stroke Alert Page to include ETA, time of onset, presenting symptoms, referring facility and physician. Pages to:
 •CCM Attending/Resident,
 •ED Flow Coordinator
 •CT Tech
 •Lab
 •Pharmacy
 •MCC Team Leader
 •Administrative Supervisor
 •Stroke Coordinator
 •Neuro/Stroke Nurse Specialist

***ED CT Tech to verify availability of Radiology Transport and inform ED flow coordinator if Radiology Transport unavailable; If Radiology Transport not available, ED Transport or Tech to assist with transport to MCC from CT

Upon transfer from ICU
 •Unassigned patients transferred to neuro service
 •Assigned patients transferred to Primary Service:
 HSM, KIP, or UFP