



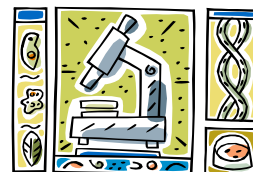
UT Cancer Institute  
**CLINICAL TRIALS  
NEWS**

a bi-monthly newsletter provided by the Clinical Trials Department at the UT Cancer Institute

**Cancer's Road Map to Metastasis Revealed**

Scientists have discovered how cancer spreads. Instead of a cell just breaking off from a tumor and traveling through the bloodstream to another organ where it forms a secondary tumor, or metastasis, the cancer sends out envoys to prepare the new site. The envoys, proteins called *fibronectin*, form a glue to attract and trap bone marrow cells to create a landing pad for cancer cells.

- David Lyden, Professor, Cornell University in New York.



**American Society Clinical Oncology's TOP 10 Most Significant Clinical Cancer Research of the Past Year.**



- \* Herceptin (reduces recurrence of HER 2-positive early-stage breast cancer by half)
- \* Chemo after surgery increases lung cancer survival (adjuvant chemo reduced risk of recurrence by 40%)
- \* Chemo after surgery reduces risk of colorectal cancer recurrence (oxaliplatin for patients with early stage colon cancer have a 21-24% reduced risk of recurrence)
- \* Avastin (improves lung and colorectal cancer survival)
- \* Vaccines effective in preventing 90-100% of HPV infections
- \* RevLimid reduces genetic abnormalities and the need for blood transfusions for those with MDS
- \* Chemo improves survival for patients with stomach cancer
- \* Temozolomide (combined with chemo is effective treatment for glioblastoma)
- \* Significant increase in melanoma and other skin cancers among young people
- \* Many childhood cancer survivors have significant health problems as adults



**KUDOS!** UTMC was the first site worldwide to enroll a patient on the ACOSOG Z4032 trial. "Randomized Phase III Study of Sublobar Resection Vs. Sublobar Resection + Brachytherapy in High Risk Patients with NSCLC, 3 cm or smaller."  
PI: Thomas Gaines, M.D. Way to go Mary!

**FDA FYI** - Arranon approved for T-cell leukemia & lymphoma. FDA grants priority review for Taxotere in combination with a current standard treatment, cisplatin & 5-FU for advanced gastric cancer.

Aromatase Inhibitor Updates

The ATAC Trial (Arimidex, Tamoxifen Alone or in Combination) data demonstrated that women who took Arimidex had a lower risk of disease recurrence compared to those who took tamoxifen. More data are needed to determine long-term survival. A European study published in NEJM concluded that Femara was also more effective at preventing recurrences than tamoxifen. Dr. Amam Buzdar from MD Anderson stated, "Optimal therapy for postmenopausal women with hormone receptor-positive early breast cancer should include an aromatase inhibitor."



About 32,180 people are diagnosed with **pancreatic cancer** each year in the US. About 31,800 die, making it the deadliest form of cancer (accounts for 1% of all deaths from all causes in the U.S.). However, of the leading cancers, pancreatic cancer receives the least NCI funding. Only an estimated \$52.7 million of the NCI's \$4.82 billion budget was spent on pancreatic cancer research in 2004 - approximately \$1,145 per patient.



Pharmaceutical companies spend an average of \$76.8 mil per drug.  
0.5% (0.3 mil) - preclinical  
2.5% (1.9 mil) - phase I  
55% (42.3 mil) - phase II & III  
42% (32.3 mil) 1-1.5 yrs after launch  
[www.pharmaoncologymarketing.com](http://www.pharmaoncologymarketing.com)

American Cancer Society



Smoking causes more than 8 out of 10 lung cancer cases and is the leading cause of cancer deaths. Lung cancer kills more people than colon, breast, and prostate cancer combined. Nearly 60% of people diagnosed with lung cancer die in the first year. (ACS 2005)

**Featured Protocol(s)**

**Antigenics C10012:** A Multi-Center, Randomized Phase II Study of Adjuvant Oncophage® Versus Observation in Patients with High Risk of Recurrence after Surgical Treatment for Renal Cell Carcinoma PI: Fred Klein, M.D.

**Millenium C05005:** A Randomized, Non-Comparative, Multicenter, Open-Label, Phase 2 Study of Tarceva Alone and of Tarceva Plus Velcade for Injection in Patients with Relapsed or Refractory, Locally Advanced or Metastatic NSCLC PI: Wahid Hanna, M.D.

Questions? Call Barbara Munsey in the Clinical Trials Office at (865) 544-9773